



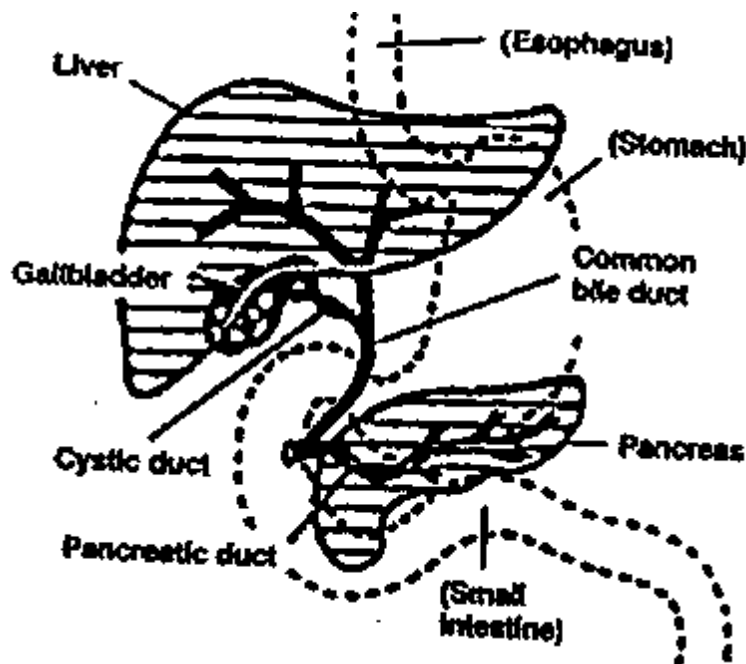
Name: _____

ENDOSCOPIC RETROGRADE CHOLANGIOPANCREATOGRAPHY (ERCP)

The following information is a brief description about ERCP. If you have any questions after reading this information, please speak with your nurse.

WHAT IS AN ERCP?

- ❖ ERCP is an examination of the duodenum, the gallbladder and the pancreatic, biliary and the hepatic ducts.
- ❖ This procedure can reveal inflammation, ulcer, blockage or growths in the areas examined.
- ❖ An endoscope, which is a flexible thin tube, is passed through your mouth, esophagus, and stomach into the duodenum.
- ❖ A catheter (narrow plastic tube) is passed through the endoscope into the ducts. Dye is then injected slowly into the ducts and x-rays are taken. If indicated, a biopsy may be done.





WHERE IS THE PROCEDURE DONE?

- ❖ Radiology Department, 2nd Floor, Tisch Hospital.

HOW LONG DOES IT TAKE?

- ❖ The procedure usually takes 30-90.

WHAT PREPARATION IS NEEDED?

- ❖ Blood work, urinalysis, chest x-ray and EKG may be done. This may be done prior to admission at Pre-Admission Testing or in your doctor's office.
- ❖ After the doctor explains the procedure, you will need to sign a consent form giving your permission for the test.
- ❖ Do not eat or drink from midnight if the procedure is scheduled for the morning. If you are scheduled later in the day, you may be permitted a liquid breakfast. Check with your nurse before you eat or drink anything.
- ❖ Take your usual medications as instructed by your doctor. You can take them with a sip of water. Check about diabetes and anticoagulant medications.
- ❖ An IV will be started before the procedure.
- ❖ Immediately before the procedure, urinate to empty your bladder and change into a hospital gown.
- ❖ Remove dentures, contact lens, and all jewelry including wedding bands, necklaces and earrings. Give these and any other valuables such as money or credit cards to your care partner.



WHAT HAPPENS DURING THE PROCEDURE?

- ❖ When you arrive at the x-ray department, you will be positioned on a x-ray table.
- ❖ You will gargle with a local anesthetic to numb your throat.
- ❖ Medication may be given through your IV to make you sleepy.
- ❖ The doctor will pass the tube through your mouth into your esophagus and down into your duodenum.
- ❖ You will be able to breathe normally after tube is in place.
- ❖ Your mouth will be suctioned as necessary to remove excess saliva.
- ❖ Air is introduced into the stomach, which may cause a feeling of fullness.
- ❖ A catheter is inserted through the endoscope. When the catheter is in the proper position, dye is injected and x-rays are taken.
- ❖ The endoscope is removed.

WHAT HAPPENS AFTER THE PROCEDURE?

- ❖ You will be returned to the Observation Area, Cooperative Care.
- ❖ The nurse will check your blood pressure, pulse, temperature and respiratory rate.
- ❖ Your nurse will tell you when you can get up and resume normal activity.
- ❖ Your nurse will check your swallowing reflex and will tell you when you can eat and drink. This will probably be a few hours after the procedure.
- ❖ Tell your nurse immediately if you have vomiting of blood or coffee ground colored material, blood in the stool or black, tarry stools.



DISCHARGE INSTRUCTIONS:

- ❖ Prior to discharge, the nurse will review discharge instructions with you.
- ❖ You should not drive if you are discharged the day of the procedure.
- ❖ IF YOU EXPERIENCE ANY OF THE SYMPTOMS ABOVE AFTER DISCHARGE, CONTACT YOUR DOCTOR IMMEDIATELY. IF SYMPTOMS ARE SEVERE GO TO YOUR LOCAL EMERGENCY ROOM.

SPECIAL INSTRUCTIONS OR QUESTIONS



CARE PARTNER RESPONSIBILITIES

Care partners play an important role and should stay with the patient for 24 hours after the procedure, if possible. You should accompany the patient home and stay overnight, if possible. The nurse in the Observation Room will be instructing the care partner in observations they need to make.

General Responsibilities include:

The care partner needs to observe:

- ❖ for any bleeding. This could include vomiting of blood or coffee ground colored materials, blood in the stools, or black tarry stools.
- ❖ continued abdominal pain or distention.
- ❖ dizziness.

If you have any questions or observe any of the above signs and symptoms, contact the nurse by dialing extension 37447 or in case of an emergency extension 72000.